

Detection of reduced interhemispheric cortical communication during task execution in multiple sclerosis patients using functional near-infrared spectroscopy

Jon J. Jimenez
Runze Yang
Nabeela Nathoo
Vishal P. Varshney
Ali-Mohammad Golestani
Bradley G. Goodyear
Luanne M. Metz
Jeff F. Dunn

Detection of reduced interhemispheric cortical communication during task execution in multiple sclerosis patients using functional near-infrared spectroscopy

Jon J. Jimenez,^{a,†} Runze Yang,^{a,†} Nabeela Nathoo,^{a,b,†} Vishal P. Varshney,^a Ali-Mohammad Golestani,^{d,e} Bradley G. Goodyear,^{a,b,d,e} Luanne M. Metz,^{b,c} and Jeff F. Dunn^{a,b,c,f,*}

^aUniversity of Calgary, Faculty of Medicine, Department of Radiology, 3330 Hospital Drive NW, Calgary, Alberta, T2N 4N1 Canada

^bUniversity of Calgary, Hotchkiss Brain Institute, 3330 Hospital Drive NW, Calgary, T2N 4N1 Canada

^cUniversity of Calgary, Faculty of Medicine, Department of Clinical Neurosciences, 3330 Hospital Drive NW, Calgary, Alberta, T2N 4N1 Canada

^dFoothills Medical Centre, Seaman Family MR Research Centre, 1403 29th St. NW, Calgary, T2N 2T9 Canada

^eUniversity of Calgary, Department of Electrical & Computer Engineering, 2500 University Drive NW, Calgary, T2N 1N4 Canada

^fUniversity of Calgary, Experimental Imaging Centre, 3330 Hospital Drive NW, Calgary, T2N 4N1 Canada

Abstract. Multiple sclerosis (MS) impairs brain activity through demyelination and loss of axons. Increased brain activity is accompanied by increases in microvascular hemoglobin oxygen saturation (oxygenation) and total hemoglobin, which can be measured using functional near-infrared spectroscopy (fNIRS). Due to the potentially reduced size and integrity of the white matter tracts within the corpus callosum, it may be expected that MS patients have reduced functional communication between the left and right sides of the brain; this could potentially be an indicator of disease progression. To assess interhemispheric communication in MS, we used fNIRS during a unilateral motor task and the resting state. The magnitude of the change in hemoglobin parameters in the motor cortex was significantly reduced in MS patients during the motor task relative to healthy control subjects. There was also a significant decrease in interhemispheric communication between the motor cortices (expressed as coherence) in MS patients compared to controls during the motor task, but not during the resting state. fNIRS assessment of interhemispheric coherence during task execution may be a useful marker in disorders with white matter damage or axonal loss, including MS. © 2014 Society of Photo-Optical Instrumentation Engineers (SPIE) [DOI: 10.1117/1.JBO.19.7.076008]

Keywords: coherence; demyelination; functional near-infrared spectroscopy; motor cortex; multiple sclerosis; near-infrared spectroscopy.

Paper 140094TNR received Feb. 17, 2014; revised manuscript received May 21, 2014; accepted for publication Jun. 2, 2014; published online Jul. 8, 2014.

1 Introduction

Multiple sclerosis (MS) is a chronic inflammatory neurological disease that results in loss of both myelin and axons.¹ In particular, the corpus callosum is known to undergo considerable damage during the progression of MS.^{2,3} Such damage could greatly reduce the functional communication between the hemispheres. Indeed, studies using functional magnetic resonance imaging (fMRI) have demonstrated disrupted inter-regional communication throughout a number of brain networks in MS patients.^{4,5}

Reduction in functional communication may, thus, be a quantifiable indicator of MS progression and response to treatments aimed at reducing demyelination, stimulating remyelination, and restoring brain function in MS. However, fMRI does not lend itself to a quick and easy bedside assessment of inter-regional communication, which is desirable for clinical application and for repeated assessments of treatment response, especially over a short period of observation.

Brain activity increases oxyhemoglobin concentration (HbO) and total hemoglobin concentration (HbT), and reduces deoxyhemoglobin concentration (HbR) due to increased perfusion.^{6,7}

Changes in these parameters are easily measurable using functional near-infrared spectroscopy (fNIRS), which is a noninvasive and portable method that monitors brain oxygenation by detecting the attenuation of light by HbO and HbR at two separate wavelengths.⁸

We and others have recently demonstrated the successful use of fNIRS in the detection of interhemispheric communication between the motor cortices of healthy control subjects by examining the coherence of brain signals in the frequency domain.^{9,10} Coherence quantifies the similarity between signals originating from different brain regions (and, hence, the strength of the functional connection) by comparing the magnitude of specific frequency components.¹¹

In this study, we used fNIRS to determine the coherence between the left and right motor cortices during task execution and rest, in MS patients and healthy controls. We hypothesized that coherence would be reduced in MS patients compared to healthy participants due to reduced interhemispheric communication. In addition, MS patients recruit more brain centers during task activation.^{12,13} This additional recruitment may also reduce coherence, so we measured during resting state as well as during task activation. If this hypothesis was proven,

*Address all correspondence to: Jeff F. Dunn, E-mail: dunnj@ucalgary.ca

[†]These authors contributed equally.

fNIRS measures of coherence could potentially be a noninvasive indicator of axonal damage and demyelination.

2 Methods

2.1 Subjects

This study was approved by the Conjoint Health Research Ethics Board of the University of Calgary. Eight MS patients (four male, four female; age 53.7 ± 8.1 years) and eight healthy control participants (six male, two female; age 42.5 ± 12.6 years, mean \pm SD) were recruited. One control subject was excluded from analysis due to poor contact between the source detectors and the scalp. The MS patient group was recruited from the Calgary MS Clinic and consisted of four relapsing remitting MS, two secondary progressive MS, one clinically isolated syndrome, and one MS patient whose diagnosis was unconfirmed. All subjects were right-handed, although this was not a selection criterion. No MS patients were using cannabinoids at the time of study, but use of disease-modifying therapies was permitted.

2.2 fNIRS System

fNIRS was collected using a continuous wave system (CW5; TechEn Inc., Milford, Massachusetts) that transmits light at 690 and 830 nm using laser diode sources and detects light using avalanche photodiode detectors. Transmitted light is frequency encoded and modulated in 200-Hz steps in the range of 6.4 to 12.6 kHz. This permits identification and simultaneous detection of each unique source-detector pair. Each source-detector pair can be identified through Fourier transformation via CW5 software.

Eight independent light sources and sixteen optical detectors were used. Fiber optics was used to connect the light to a custom-built head cap. The head cap was positioned such that the posterior light sources were placed at 40% of the distance along the midline between the top of the nasal cartilage and the end of the occipital bone. The row of source detectors extended down each side, with the lowest detector being positioned just above the ear. Based on the electroencephalography coordinate system as described previously,^{10,14} this covers the motor cortex. The probe was affixed to the head using a Velcro strap. Source-detector pair separation was ~ 2.0 cm, providing a head coverage of $\sim 5.6 \times 6.0$ cm². The array was covered with black cotton cloth to block extraneous light.

2.3 Imaging Protocol

Participants sat in a comfortable chair in a darkened room. fNIRS data were first collected for 300 s while participants rested. Data were then collected while subjects performed a finger tapping paradigm using their right hand, where the index and middle fingers were simultaneously touched with the thumb at a rate of 1 Hz, as timed by an audio metronome. It is unlikely that this signal from the auditory cortex can be detected using this experimental setup, as the light sources-detectors do not extend that far down the head.

The complete paradigm consisted of 30 s of rest followed by six alternating periods of 15 s of tapping and 30 s of rest (without any sound), for a total time of 300 s. As the motor function is in the right hand, we expect the predominant activation to be in the left motor cortex.

2.4 Data Processing and Analysis

Hemodynamic evoked response software (Center for Functional Neuroimaging Technologies, Charlestown, Massachusetts)¹⁵ was used to process the fNIRS data. Physiological noise was first removed using a low-pass filter of 0.8 Hz. Concentrations of HbO, HbR, and HbT were then calculated for each source-detector pair combination.

Changes in the concentration of HbO and HbT as a result of each finger tapping block were calculated for each source-detector pair by subtracting the average of the middle 7.5 s of the baseline periods prior to and after a tapping block from the average of the last 10 s of the finger tapping block. A univariate two-factor analysis of variance (ANOVA) was used to compare the HbT and HbO concentration changes for the source-detector pair that exhibited the greatest change, with block (1 through 6) and subject group (patient, control).

The source-detector pair that exhibited the greatest change in HbO during finger tapping was assumed to be the location of the motor cortex and was subsequently used as the location (or seed) for comparison with all other pairs during coherence analysis. In our subjects, this source-detector pair also showed the greatest change in HbT. Coherence maps for each of HbO and HbT, for each of the subjects at rest and finger tapping, were then generated using a custom MATLAB® program, over the frequency band of 0.02 to 0.04 Hz as described previously.¹⁰ In the hemisphere ipsilateral to the seed, coherence was averaged over the three source-detector pairs surrounding the seed (the seed was not included, as coherence is 1 by definition). In the contralateral hemisphere, coherence was averaged over the four source-detector pairs at the homologous locations.

Coherence values from all participants were tested as a group for normality using the Shapiro-Wilk normality test and by creating Q-Q plots. Upon confirming normality, univariate ANOVAs were conducted for each of HbO or HbT coherence, with subject group (patient, control) and hemisphere (ipsilateral, contralateral) as factors. Follow-up *t* tests were used to further compare subgroups.

3 Results

ANOVAs revealed no effect of the task block (i.e., there was no difference between the six rest/tapping tasks) on the change in HbT or HbO concentration [$F(1, 93) = 1.38$; $p = 0.243$]. There was, however, an effect of subject group, with MS subjects exhibiting a smaller change in concentration of HbT [$F(1, 93) = 9.43$; $p = 0.003$] and HbO [$F(1, 93) = 4.40$; $p = 0.039$] during finger tapping, compared to controls (Fig. 1).

Figure 2(a) shows a representative HbT coherence map calculated from data collected during finger tapping in a healthy control subject, demonstrating high coherence in both the left and right motor cortices. Figure 2(b) shows a representative HbT coherence map during finger tapping for an MS patient, demonstrating reduced coherence relative to the control subject.

Finger tapping resulted in a significant increase in HbT coherence in controls in both the ipsilateral, as well as the contralateral side [$F(1, 22) = 8.46$; $p = 0.009$], but not in patients with MS. There was a significant difference in HbT coherence during finger tapping between patients and control subjects [$F(1, 22) = 8.23$; $p = 0.009$]. Follow-up *t* tests revealed that HbT coherence in the contralateral hemisphere was significantly reduced in MS patients compared to controls [$t(12) = -4.00$, $p = 0.006$] (Fig. 3). There is a significant difference in coherence between the ipsilateral and contralateral hemispheres

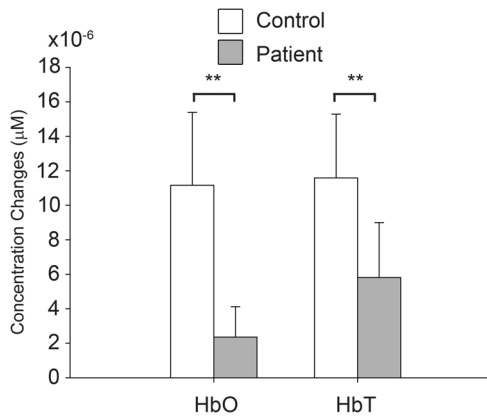


Fig. 1 Changes in HbO and HbT concentrations in the left motor cortex during finger tapping. Control subjects exhibit significantly greater changes in HbO and HbT concentrations compared to multiple sclerosis (MS) patients (mean \pm SEM; $n = 7$ controls, 8 patients; $**p < 0.01$).

relative to the seed in both controls and MS patients [$F(1, 22) = 12.45$; $p = 0.002$] (Fig. 3). There were no interactions between the subject group and the hemisphere [$F(1, 22) = 2.08$; $p = 0.16$]. Interestingly, there were no significant differences in resting-state coherence between MS and controls. There were also no significant differences in HbO coherence between groups or hemispheres, for finger tapping and the resting state.

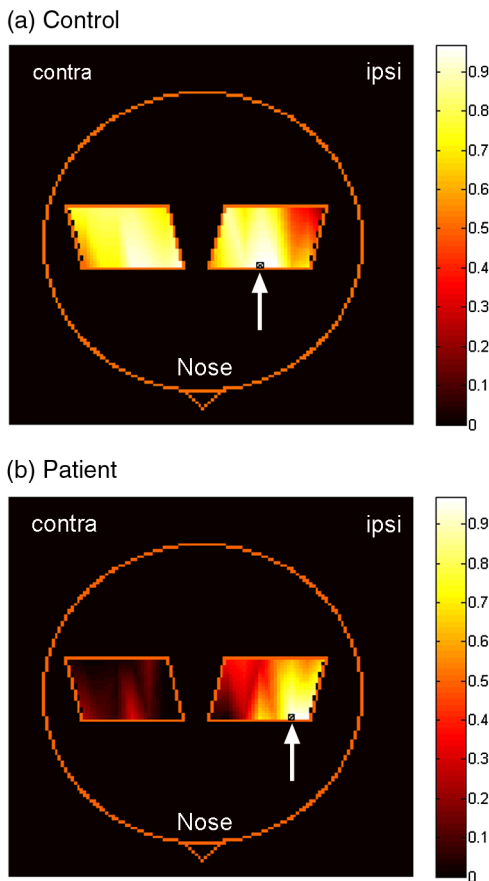


Fig. 2 HbT coherence maps during finger tapping for a representative (a) control subject and (b) MS patient. White arrows indicate the location of the source-detector pair that was selected as the seed signal.

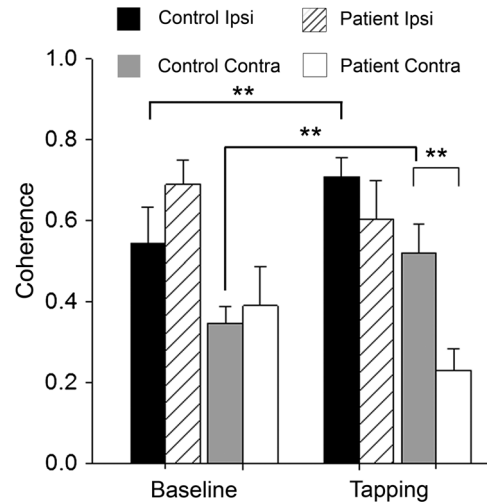


Fig. 3 HbT coherence during resting state and finger tapping. Coherence on the contralateral side is significantly reduced in MS patients compared to controls during finger tapping (mean \pm SEM; $**p < 0.01$).

4 Discussion

The fNIRS data show increased HbO and HbT concentrations for all participants in response to finger tapping. However, the magnitude of oxygenation changes in response to task execution was reduced in MS patients (i.e., less increase in HbT or HbO) compared to controls. Studies using blood oxygen level dependent MRI have shown that MS patients may have a larger volume of activation compared to controls for a given task,¹⁶ and more brain centers are recruited.^{12,13} Since more brain centers are needed for a particular task, it is possible that an individual region has a reduced magnitude of activation, which would explain the smaller changes in HbT and HbO.

The use of coherence analysis has been applied previously to fNIRS data to study regional connectivity.^{9,10} Using a frequency band similar to that in the current study, these groups reported a mean interhemispheric coherence during the resting states of 0.6 and 0.5, respectively, which is similar to that of 0.53 reported in this paper. This repeatability supports the concept that fNIRS is a reliable method for studying functional connectivity in the cortex.

There was no significant difference in contralateral coherence between controls and MS patients during the resting state. fMRI data have been used to report both higher and lower coherence in the motor cortex during the resting state when comparing MS to controls.^{5,17-19} Resolution of these differences will need additional studies.

Finger tapping significantly increased HbT coherence in both ipsilateral and contralateral hemispheres of control subjects. However, MS patients did not show significant changes in HbT coherence during finger tapping. The relative increase in coherence in controls during task activation resulted in a significant difference in coherence in the contralateral hemisphere between controls and MS patients during the task. Although we do not have a clear mechanism at this time, there is clearly a change in how coherence is regulated that relates to the presence of task activation. This is in agreement with previous fMRI studies, which found that increased functional connectivity occurred during task activation.^{20,21} Reduced coherence could be the result of reduced axonal integrity,² atrophy of the corpus callosum,^{22,23} or increased demyelination.^{24,25}

Interhemispheric HbO coherence, on the other hand, was not significantly different between MS patients and healthy controls. One possible reason for this discrepancy could be that HbT is less susceptible to contamination signals from pial vessels²⁶ and, hence, is a better indicator of functional communication between brain regions.

In fNIRS, there is a partial volume effect in that light passes through tissue other than brain. There may also be extracerebral signals, such as pial vessels and blood in the skull that will contaminate the signal.²⁶ This would mean that brain atrophy may influence the results if there is a change in distance from the optical fibers to the brain. It is known that brain atrophy is common in MS patients.^{27,28} MS patients with a long disease duration have cortical thinning,²⁹ which could increase the distance between the skull and the brain. The reduced magnitude of HbT and HbO responses in MS patients could, in part, be explained if there was an increased distance from the fibers to the brain. However, half of the MS patients included in this study were relapsing-remitting patients, who typically have less brain atrophy compared to progressive MS patients.³⁰ An advantage of coherence analysis is that these partial volume problems would not be expected to impact the frequency responses.

In conclusion, we showed that fNIRS measurements of coherence may be useful in detecting functional changes in MS patients. The overlap between the results of patients and controls would suggest that it would be difficult to identify a single MS patient. However, improvements in data collection and analysis may provide useful additional power with respect to making such a discrimination. For instance, cognitive impairments occur frequently in patients with MS, suggesting alterations in the prefrontal cortex.³¹ Therefore, choosing another region other than the motor cortex may be useful in identifying patients on an individual basis. As we hypothesize that the reduction in coherence is a result of impaired communication following white matter degeneration and axonal loss, it follows that this study paradigm may also be useful for any condition with such a degeneration. This technique could then be applied to disorders such as mild traumatic brain injury³² and schizophrenia.³³ Coherence analysis using fNIRS is a promising technique in brain research and clinical practice.

Acknowledgments

This research was supported by the Multiple Sclerosis Society of Canada, the Alberta endMS Regional Research and Training Centre of the endMS Research and Training Network, the National Science and Engineering Research Council of Canada, Alberta Innovates-Health Solutions, and the Undergraduate Student Research Program at the University of Calgary.

References

1. S. K. Ludwin, "The pathogenesis of multiple sclerosis: relating human pathology to experimental studies," *J. Neuropathol. Exp. Neurol.* **65**(4), 305–318 (2006).
2. N. Evangelou et al., "Regional axonal loss in the corpus callosum correlates with cerebral white matter lesion volume and distribution in multiple sclerosis," *Brain* **123**(9), 1845–1849 (2000).
3. A. D. Gean-Marton et al., "Abnormal corpus callosum: a sensitive and specific indicator of multiple sclerosis," *Radiology* **180**(1), 215–221 (1991).
4. B. Basile et al., "Functional connectivity changes within specific networks parallel the clinical evolution of multiple sclerosis," *Mult. Scler.* **20**(8), 1050–1057 (2013).
5. M. A. Rocca et al., "Large-scale neuronal network dysfunction in relapsing-remitting multiple sclerosis," *Neurology* **79**(14), 1449–1457 (2012).
6. R. B. Buxton, E. C. Wong, and L. R. Frank, "Dynamics of blood flow and oxygenation changes during brain activation: the balloon model," *Magn. Reson. Med.* **39**(6), 855–864 (1998).
7. I. Kida, D. L. Rothman, and F. Hyder, "Dynamics of changes in blood flow, volume, and oxygenation: implications for dynamic functional magnetic resonance imaging calibration," *J. Cereb. Blood Flow Metab.* **27**(4), 690–696 (2007).
8. T. J. Huppert et al., "A temporal comparison of BOLD, ASL, and NIRS hemodynamic responses to motor stimuli in adult humans," *Neuroimage* **29**(2), 368–382 (2006).
9. S. Sasaki et al., "Frequency-specific functional connectivity in the brain during resting state revealed by NIRS," *Neuroimage* **56**(1), 252–257 (2011).
10. V. Varshney et al., "Detection of inter-hemispheric functional connectivity in motor cortex with coherence analysis," *J. Eur. Opt. Soc.* **7**, 12047 (2012).
11. F. T. Sun, L. M. Miller, and M. D'Esposito, "Measuring interregional functional connectivity using coherence and partial coherence analyses of fMRI data," *Neuroimage* **21**(2), 647–658 (2004).
12. M. Lee et al., "The motor cortex shows adaptive functional changes to brain injury from multiple sclerosis," *Ann. Neurol.* **47**(5), 606–613 (2000).
13. M. A. Rocca et al., "Adaptive functional changes in the cerebral cortex of patients with nondisabling multiple sclerosis correlate with the extent of brain structural damage," *Ann. Neurol.* **51**(3), 330–339 (2002).
14. M. A. Franceschini et al., "Hemodynamic evoked response of the sensorimotor cortex measured noninvasively with near-infrared optical imaging," *Psychophysiology* **40**(4), 548–560 (2003).
15. T. J. Huppert et al., "HomER: a review of time-series analysis methods for near-infrared spectroscopy of the brain," *Appl. Opt.* **48**(10), D280–298 (2009).
16. M. Filippi et al., "Functional magnetic resonance imaging correlates of fatigue in multiple sclerosis," *Neuroimage* **15**(3), 559–567 (2002).
17. P. Valsasina et al., "A multicentre study of motor functional connectivity changes in patients with multiple sclerosis," *Eur. J. Neurosci.* **33**(7), 1256–1263 (2011).
18. M. Wojtowicz et al., "Altered functional connectivity and performance variability in relapsing-remitting multiple sclerosis," *Mult. Scler.* (2014).
19. G. Zito et al., "Inter-hemispheric functional connectivity changes with corpus callosum morphology in multiple sclerosis," *Neuroscience* **266**, 47–55 (2014).
20. A. T. Newton, V. L. Morgan, and J. C. Gore, "Task demand modulation of steady-state functional connectivity to primary motor cortex," *Hum. Brain Mapp.* **28**(7), 663–672 (2007).
21. V. Riedl et al., "Local activity determines functional connectivity in the resting human brain: a simultaneous FDG-PET/fMRI study," *J. Neurosci.* **34**(18), 6260–6266 (2014).
22. J. L. Dietemann et al., "Multiple sclerosis and corpus callosum atrophy: relationship of MRI findings to clinical data," *Neuroradiology* **30**(6), 478–480 (1988).
23. J. Martola et al., "Progression of non-age-related callosal brain atrophy in multiple sclerosis: a 9-year longitudinal MRI study representing four decades of disease development," *J. Neurol. Neurosurg. Psychiatry* **78**(4), 375–380 (2007).
24. R. O. Barnard and M. Triggs, "Corpus callosum in multiple sclerosis," *J. Neurol. Neurosurg. Psychiatry* **37**(11), 1259–1264 (1974).
25. J. H. Simon et al., "Corpus callosum and subcallosal-periventricular lesions in multiple sclerosis: detection with MR," *Radiology* **160**(2), 363–367 (1986).
26. L. Gagnon et al., "Quantification of the cortical contribution to the NIRS signal over the motor cortex using concurrent NIRS-fMRI measurements," *Neuroimage* **59**(4), 3933–3940 (2012).
27. N. F. Kalkers et al., "Longitudinal brain volume measurement in multiple sclerosis: rate of brain atrophy is independent of the disease subtype," *Arch. Neurol.* **59**(10), 1572–1576 (2002).

28. R. A. Rudick et al., "Use of the brain parenchymal fraction to measure whole brain atrophy in relapsing-remitting MS. Multiple Sclerosis Collaborative Research Group," *Neurology* **53**(8), 1698–1704 (1999).
29. M. Sailer et al., "Focal thinning of the cerebral cortex in multiple sclerosis," *Brain* **126**(8), 1734–1744 (2003).
30. E. Fisher et al., "Gray matter atrophy in multiple sclerosis: a longitudinal study," *Ann. Neurol.* **64**(3), 255–265 (2008).
31. J. Lovera and B. Kovner, "Cognitive impairment in multiple sclerosis," *Curr. Neurol. Neurosci. Rep.* **12**(5), 618–627 (2012).
32. B. Johnson et al., "Alteration of brain default network in subacute phase of injury in concussed individuals: resting-state fMRI study," *Neuroimage* **59**(1), 511–518 (2012).
33. R. W. Cogger and E. A. Serafetinides, "Schizophrenia, corpus callosum, and interhemispheric communication: a review," *Psychiatry Res.* **34**(2), 163–184 (1990).

Biographies of the authors are not available.