

Application of moderate resolution imaging spectroradiometer snow cover maps in modeling snowmelt runoff process in the central Zab basin, Iran (Erratum)

Himan Shahabi,^{a,*} Saeed Khezri,^b Baharin Bin Ahmad,^a
and Tajul Ariffin Musa^c

^aUniversiti Teknologi Malaysia, Institute of Geospatial Science and Technology, Skudai, Johor Bahru, Malaysia

^bUniversity of Kurdistan, Department of Physical Geography, Faculty of Natural Resources, Iran

^cUniversiti Teknologi Malaysia, UTM-GNSS and Geodynamics Research Group, Faculty of Geoinformation and Real Estate, Skudai, Johor, Malaysia

[DOI: [10.1117/1.JRS.15.029901](https://doi.org/10.1117/1.JRS.15.029901)]

This article [*J. of Applied Remote Sensing*, 8(1), 084699 (2014). <https://doi.org/10.1117/1.JRS.8.084699>] has had several figures republished for clarity. Values in the scale bars in Figs. 1 and 2 were unclear. Those figures have been reconfigured to be more readable. In Figs. 3 and 6–9, the position of the study area was unclear because of the use of the transverse Mercator coordinate system. The figures have been revised to better represent the study area.

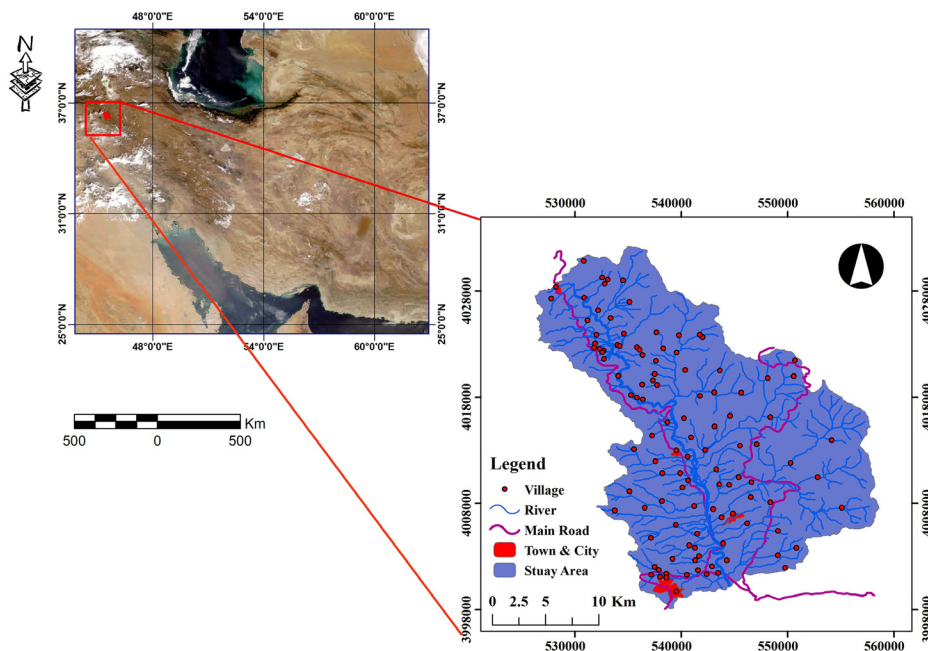


Fig. 1 Geographical position of central Zab basin.

*Address all correspondence to Himan Shahabi, himanshababi@gmail.com

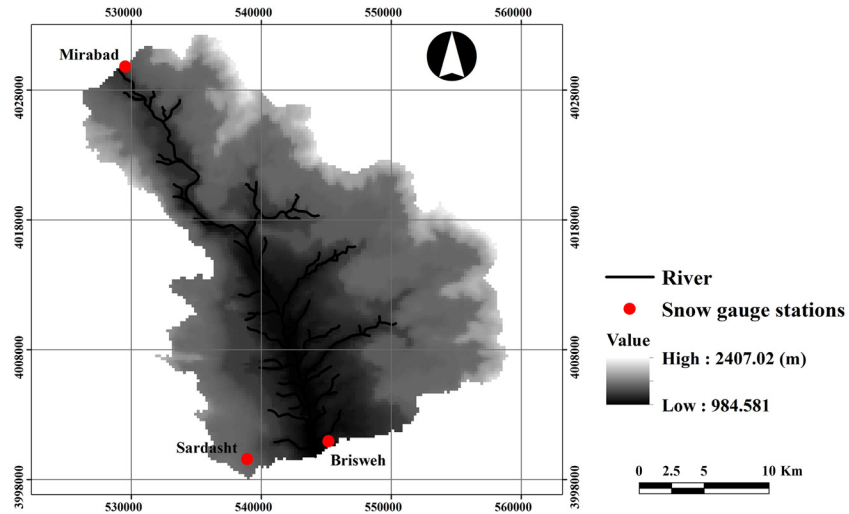


Fig. 2 Location of snow gauge stations location on DEM of central Zab basin extracted from an advanced spaceborne thermal emission and reflection radiometer image.

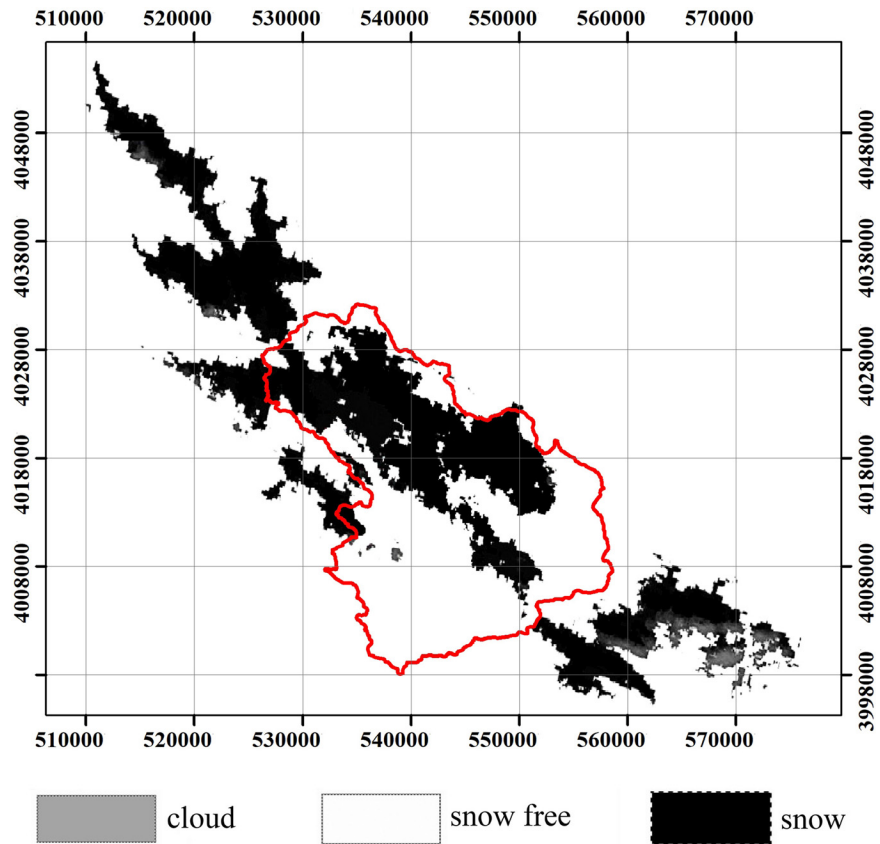


Fig. 3 Snow, snow free, and cloud covers extracted from moderate resolution imaging spectroradiometer (MODIS) satellite images taken on February 14, 2011.

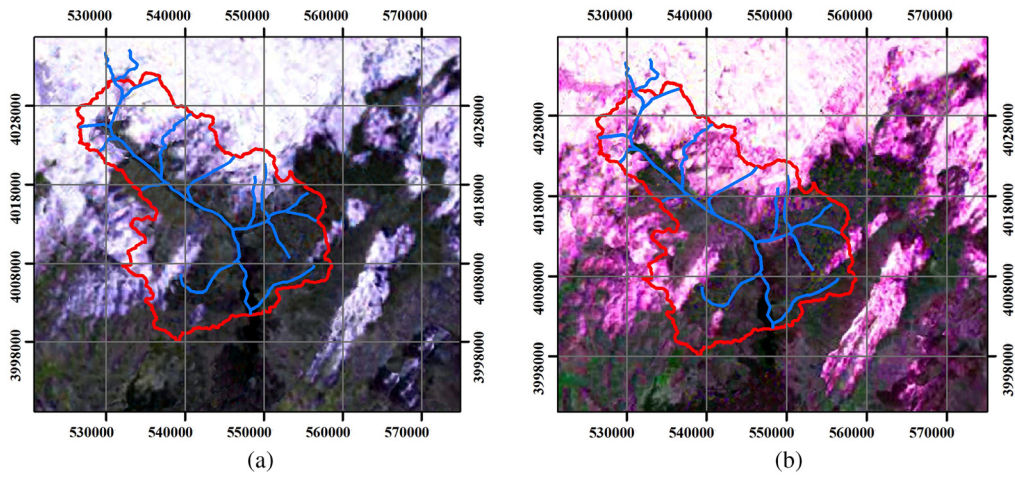


Fig. 6 Accuracy test of the process of geometric correction using the layer of basin waterways before (a) and after (b) the process of geometric correction.

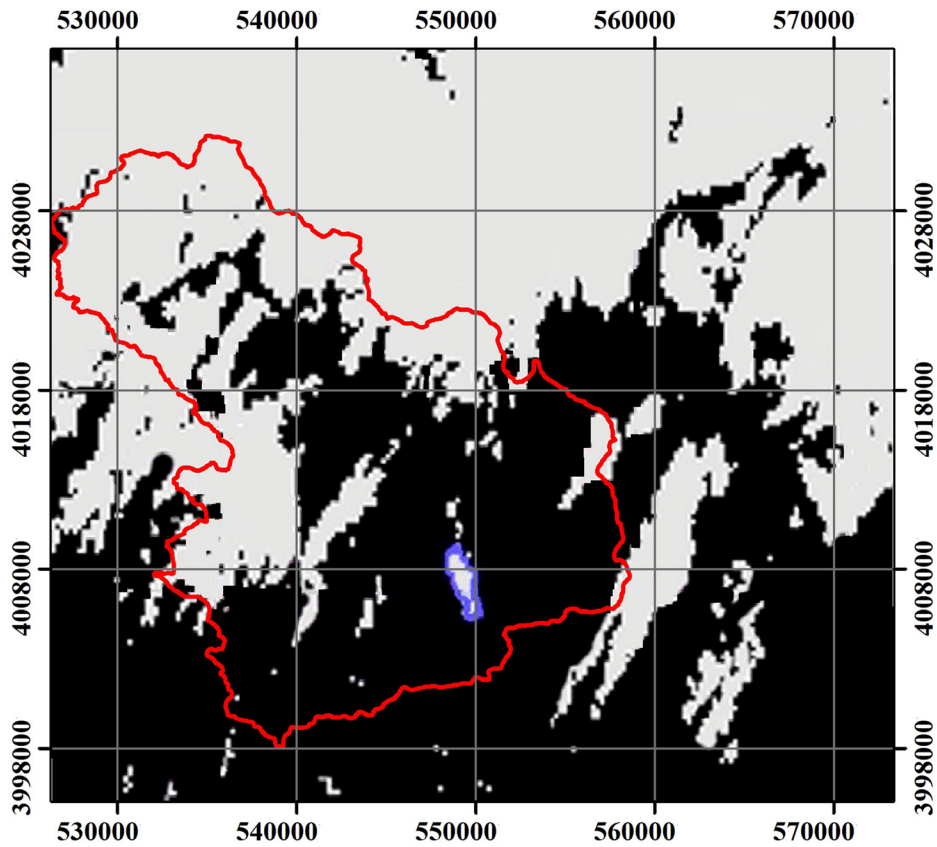


Fig. 7 Separated snow by normalized difference snow index (NDSI) method.

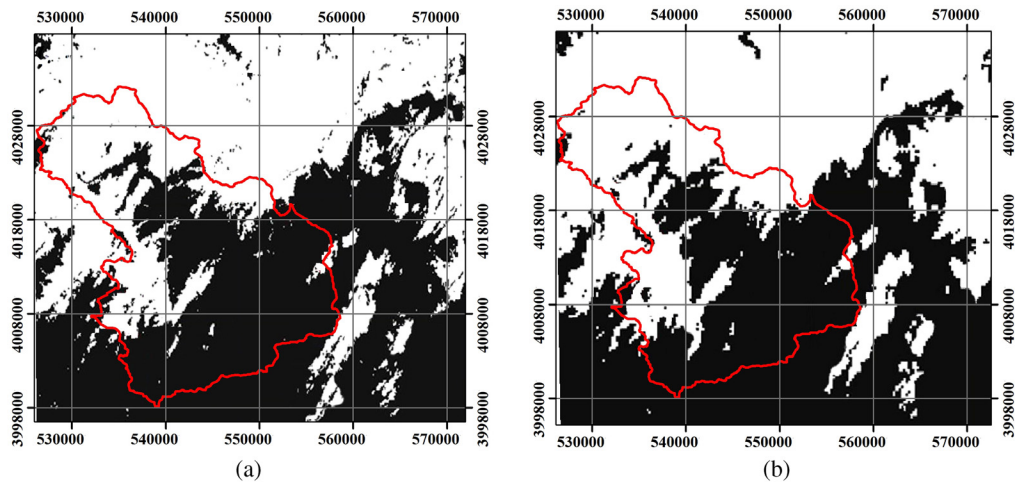


Fig. 8 Reflection band 2 (a) and band 4 (b) reflectance criteria used for snow separation.

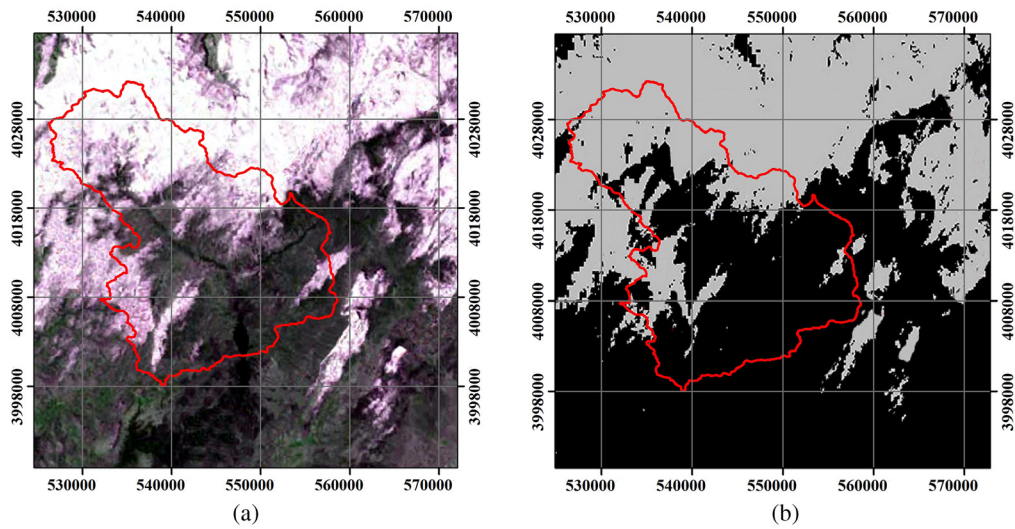


Fig. 9 The real MODIS image (a) and snow separated by the NDSI method (b).

All versions of the article were corrected on 26 May 2021.