

# Journal of Biomedical Optics

[SPIDigitalLibrary.org/jbo](http://SPIDigitalLibrary.org/jbo)

## **Errata: Altered lymphatic function and architecture in salt-induced hypertension assessed by near-infrared fluorescence imaging**

Sunkuk Kwon  
Germaine D. Agollah  
Wenyaw Chan  
Eva M. Sevick-Muraca

# Errata: Altered lymphatic function and architecture in salt-induced hypertension assessed by near-infrared fluorescence imaging

Sunkuk Kwon,<sup>a</sup> Germaine D. Agollah,<sup>a,b</sup> Wenyaw Chan,<sup>c</sup> and Eva M. Sevick-Muraca<sup>a</sup>

<sup>a</sup>University of Texas Health Science Center, Center for Molecular Imaging, The Brown Foundation Institute of Molecular Medicine, Houston, Texas 77030

<sup>b</sup>University of Texas Graduate School of Biomedical Sciences at Houston, University of Texas MD Anderson Cancer Center, Houston, Texas 77030

<sup>c</sup>University of Texas Health Science Center at Houston, School of Public Health, Houston, Texas 77030

[DOI: 10.1117/1.JBO.17.8.089802]

This article [*J. Biomed. Opt.* **17**, 080504 (2012)] was originally published online on 16 August 2012 with errors in the caption and callout of Fig. 1. A sentence was removed from the caption, and two references to figure parts were changed in text.

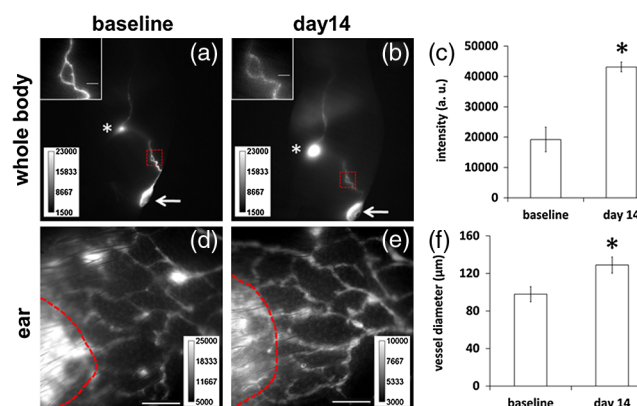
On p. 2, column 2, the first full sentence was changed from:

“In addition, our data showed significantly increased fluorescent intensities in the ILN of HSD-fed mice as compared to baseline, indicating increased lymph flow. Similar to these results in mice, our data also demonstrated dilated lymphatic vessels in the ear of rats fed a HSD [Fig. 1(f)], which were confirmed by immunofluorescence staining of lymphatic vessels [Fig. 1(d) and 1(h)].”

To:

“In addition, our data showed significantly increased fluorescent intensities in the ILN of HSD-fed mice as compared to baseline, indicating increased lymph flow [Fig. 1(c)]. Similar to these results in mice, our data also demonstrated dilated lymphatic vessels in the ear of rats fed a HSD [Fig. 1(f)], which were confirmed by immunofluorescence staining of lymphatic vessels (data not shown).”

Figure 1 and the corrected caption are reprinted here. All versions of the article were corrected on 21 August 2012.



**Fig. 1** Dilated lymphatic vessels were observed in the hindlimb (inset in (b)) of HSD-fed mice and in the ear of HSD-fed rats (e) as compared to baseline data in the hindlimb [inset in (a)] and in the ear (d). (c) Significantly increased fluorescent intensities in the ILN of HSD-fed mice were observed as compared to baseline. (f) The apparent average lymphatic vessel diameter associated with HSD was significantly enlarged as compared to baseline. *Inset*, magnified fluorescent images of the dashed rectangles. *Asterisk*, ILN. *Arrow*, ICG injection site. *Scale bar*: 1 mm. Dashed lines in (d) and (e) indicate the boundary of the injection site. \* $p < 0.05$  versus baseline.